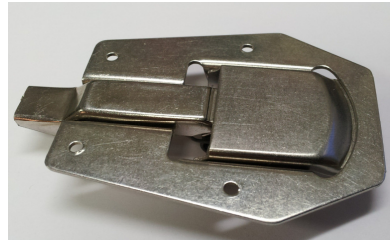


# Ho-Ho-Kus, Incorporated

P.O. Box 447  
 Ho-Ho-Kus, New Jersey 07423  
 Tel: 973-278-2274  
[www.hohokusinc.com](http://www.hohokusinc.com)  
[sales2@hohokusinc.com](mailto:sales2@hohokusinc.com)



## AIRCRAFT LATCH CROSS REFERENCE GUIDE

Ho-Ho-Kus P/N	Competitor Equivalent P/N	Description
HK5L5000-025-025	H5000-2-025-025	Flush Trigger Aircraft Latch
HK5L5000-025-032	H5000-2-025-032	Flush Trigger Aircraft Latch
HK5L5000-025-040	H5000-2-025-040	Flush Trigger Aircraft Latch
HK5L5000-025-051	H5000-2-025-051	Flush Trigger Aircraft Latch
HK5L5000-025-064	H5000-2-025-064	Flush Trigger Aircraft Latch
HK5L5000-025-072	H5000-2-025-072	Flush Trigger Aircraft Latch
HK5L5000-025-081	H5000-2-025-081	Flush Trigger Aircraft Latch
HK5L5000-025-091	H5000-2-025-091	Flush Trigger Aircraft Latch
HK5L5000-025-096	H5000-2-025-096	Flush Trigger Aircraft Latch
HK5L5000-025-102	H5000-2-025-102	Flush Trigger Aircraft Latch
HK5L5000-025-115	H5000-2-025-115	Flush Trigger Aircraft Latch
HK5L5000-025-125	H5000-2-025-125	Flush Trigger Aircraft Latch
HK5L5000-025-132	H5000-2-025-132	Flush Trigger Aircraft Latch
HK5L5000-025-142	H5000-2-025-142	Flush Trigger Aircraft Latch
HK5L5000-025-156	H5000-2-025-156	Flush Trigger Aircraft Latch
HK5L5000-025-164	H5000-2-025-164	Flush Trigger Aircraft Latch
HK5L5000-025-179	H5000-2-025-179	Flush Trigger Aircraft Latch
HK5L5000-025-188	H5000-2-025-188	Flush Trigger Aircraft Latch
HK5L5000-025-196	H5000-2-025-196	Flush Trigger Aircraft Latch
HK5L5000-025-218	H5000-2-025-218	Flush Trigger Aircraft Latch
HK5L5000-025-235	H5000-2-025-235	Flush Trigger Aircraft Latch
HK5L5000-025-250	H5000-2-025-250	Flush Trigger Aircraft Latch
HK5L5000-025-268	H5000-2-025-268	Flush Trigger Aircraft Latch
HK5L5000-025-279	H5000-2-025-279	Flush Trigger Aircraft Latch
HK5L5000-025-292	H5000-2-025-292	Flush Trigger Aircraft Latch
HK5L5000-025-312	H5000-2-025-312	Flush Trigger Aircraft Latch
HK5L5000-025-340	H5000-2-025-340	Flush Trigger Aircraft Latch
HK5L5000-032-025	H5000-2-032-025	Flush Trigger Aircraft Latch
HK5L5000-032-032	H5000-2-032-032	Flush Trigger Aircraft Latch
HK5L5000-032-040	H5000-2-032-040	Flush Trigger Aircraft Latch
HK5L5000-032-051	H5000-2-032-051	Flush Trigger Aircraft Latch
HK5L5000-032-064	H5000-2-032-064	Flush Trigger Aircraft Latch
HK5L5000-032-072	H5000-2-032-072	Flush Trigger Aircraft Latch
HK5L5000-032-081	H5000-2-032-081	Flush Trigger Aircraft Latch
HK5L5000-032-091	H5000-2-032-091	Flush Trigger Aircraft Latch
HK5L5000-032-096	H5000-2-032-096	Flush Trigger Aircraft Latch
HK5L5000-032-102	H5000-2-032-102	Flush Trigger Aircraft Latch





























































HK5L5100-220-115	H5100-2-220-115	Flush Trigger Aircraft Latch
HK5L5100-220-125	H5100-2-220-125	Flush Trigger Aircraft Latch
HK5L5100-220-142	H5100-2-220-142	Flush Trigger Aircraft Latch
HK5L5100-220-156	H5100-2-220-156	Flush Trigger Aircraft Latch
HK5L5100-220-164	H5100-2-220-164	Flush Trigger Aircraft Latch
HK5L5100-220-179	H5100-2-220-179	Flush Trigger Aircraft Latch
HK5L5100-220-188	H5100-2-220-188	Flush Trigger Aircraft Latch
HK5L5100-220-196	H5100-2-220-196	Flush Trigger Aircraft Latch
HK5L5100-220-218	H5100-2-220-218	Flush Trigger Aircraft Latch
HK5L5100-220-250	H5100-2-220-250	Flush Trigger Aircraft Latch
HK5L5100-220-275	H5100-2-220-275	Flush Trigger Aircraft Latch
HK5L5100-220-312	H5100-2-220-312	Flush Trigger Aircraft Latch
HK5L5100-220-330	H5100-2-220-330	Flush Trigger Aircraft Latch