



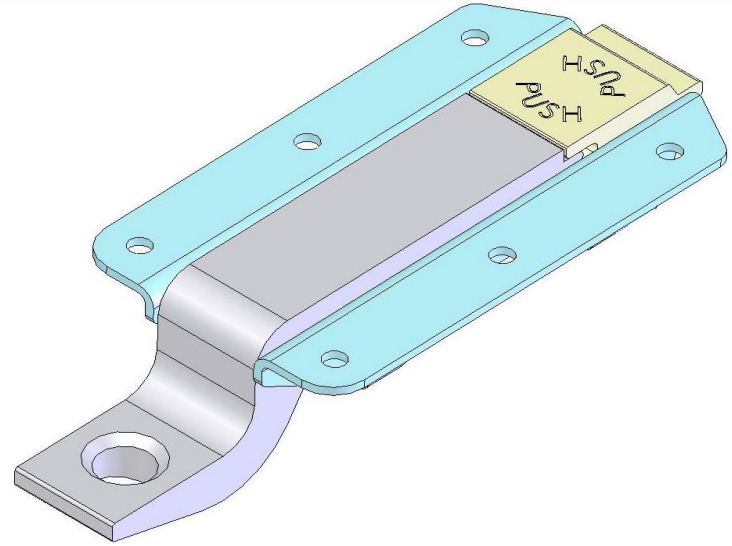
HO-HO-KUS, INC.

... WHERE DREAMS AND IMAGINATION COME TO LIFE

HK5L3800 FLUSH LATCH

HK5L3800 FLUSH PANEL LATCH FEATURES AND BENEFITS

- EXTERNAL ACCESS DOORS & PANELS
- EASY INSTALLATION ON ANY STRUCTURE MATERIAL
- MULTIPLE FASTENING OPTIONS AVAILABLE
- LIGHT WEIGHT DESIGN: APPROX .29 LBS
- 300 SERIES STAINLESS STEEL BRACKET
- 2024 ALUMINUM ALLOY BOLT & TRIGGER
- ULTIMATE LATCH LOAD: 900 LBS

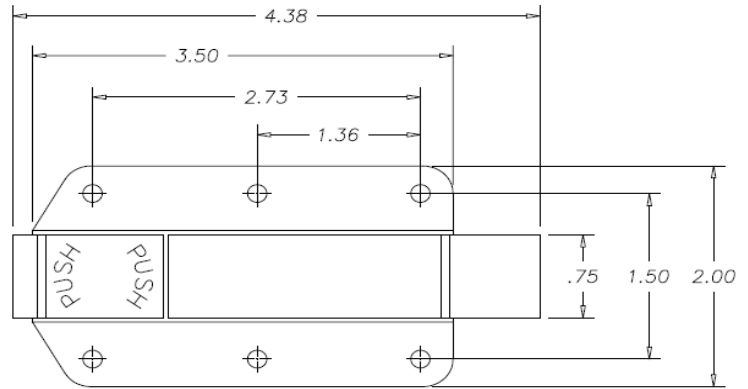
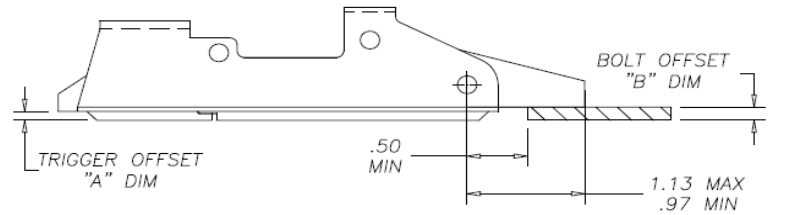


**Preferred
Trigger Offset**
First Dash # "A" Dim

032	.032"
045	.045"
051	.051"
064	.064"
072	.072"
075	.075"
081	.081"
091	.091"
102	.102"
125	.125"
132	.132"
188	.188"
250	.250"

**Preferred
Bolt Offset**
Second Dash # "B" Dim

250	.250"
281	.281"
312	.312"
375	.375"
437	.437"
500	.500"
625	.625"
718	.718"
750	.750"
781	.781"
828	.828"
875	.875"
906	.906"
938	.938"
1000	1.000"
1063	1.063"
1125	1.125"
1188	1.188"
1250	1.250"
1312	1.312"
1375	1.375"
1500	1.500"



Ho-Ho-Kus, Inc.
189-201 Lyon Street
Paterson, NJ 07524
+1-973-278-2274 office
+1-973-278-4805 fax

Have a question?



Willie Worm Drive
engineering@hohokusinc.com